



# Classic Spiral Stairways

Aluminum  
and  
Steel

AVAILABLE IN  
48", 54", 60" DIAMETERS

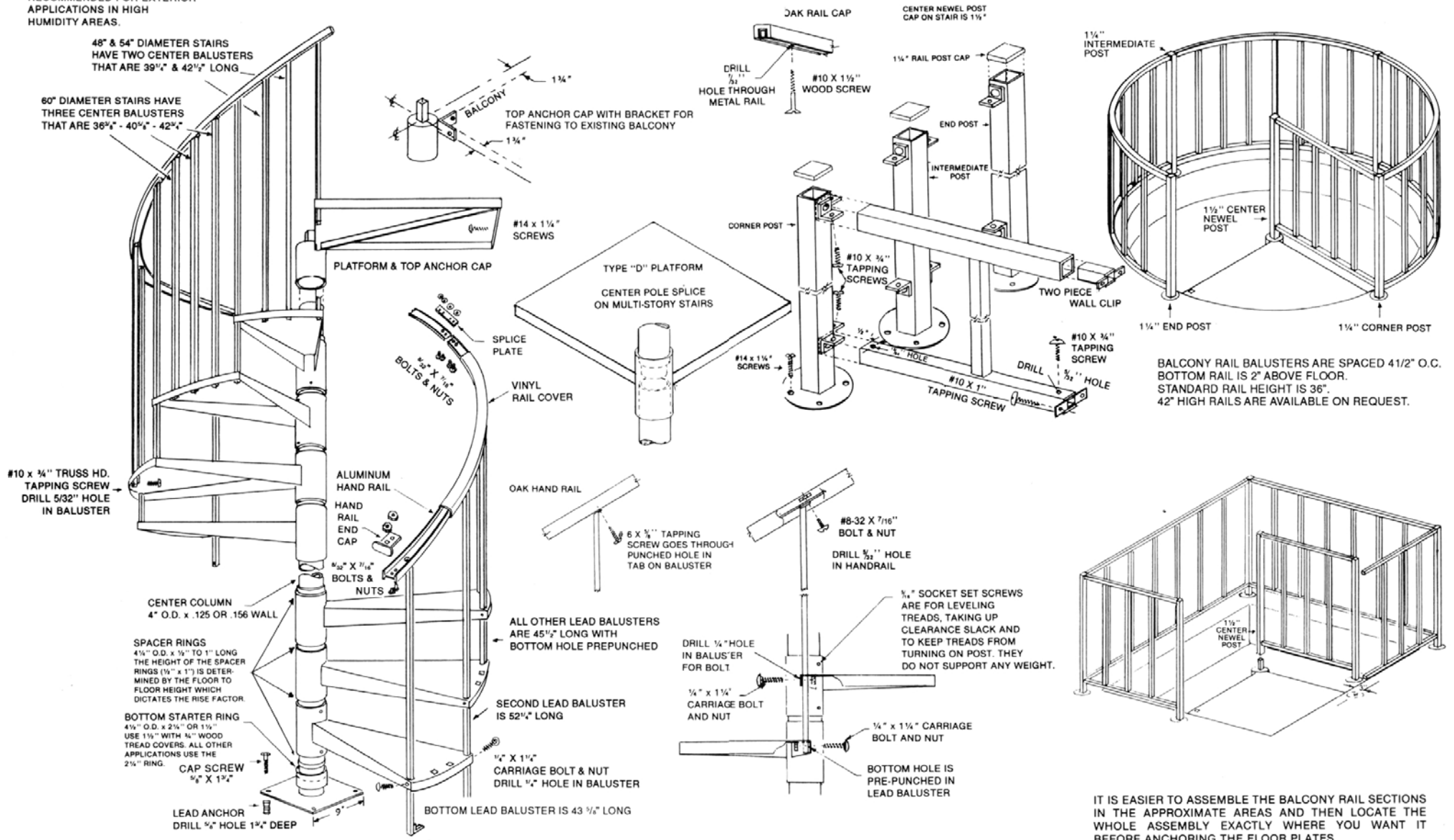


POWDER COAT PAINT FINISH  
STANDARD COLOR IS BRONZE  
BLACK, WHITE AND RED ARE OPTIONAL

THE ALUMINUM STAIR IS  
RECOMMENDED FOR EXTERIOR  
APPLICATIONS IN HIGH  
HUMIDITY AREAS.

## ALUMINUM AND STEEL SPIRAL STAIRS

by Columns, Inc. — Pearland, Texas 77581



BALCONY RAIL BALUSTERS ARE SPACED 41/2" O.C.  
BOTTOM RAIL IS 2" ABOVE FLOOR.  
STANDARD RAIL HEIGHT IS 36".  
42" HIGH RAILS ARE AVAILABLE ON REQUEST.

IT IS EASIER TO ASSEMBLE THE BALCONY RAIL SECTIONS  
IN THE APPROXIMATE AREAS AND THEN LOCATE THE  
WHOLE ASSEMBLY EXACTLY WHERE YOU WANT IT  
BEFORE ANCHORING THE FLOOR PLATES.

## STEEL SPECIFICATIONS

All exposed steel parts are pre-finished with a bronze baked-on powder coat finish.

Treads and platform are formed from 12 gauge steel sheet.

Center column is a sturdy 4" diameter x .125 wall welded steel tubing.

Stair tread hubs from Schedule 40 steel pipe, 4 1/2" diameter x .238 wall.

Floor plate stamped from 1/4" steel plate.

Balcony rails are 16 gauge square welded steel tubing with balusters spaced 4 1/2" O.C.

- Corner post = 1 1/4" sq.
- Balusters = 3/4" sq.
- Top and bottom rail = 1" sq.

Hand rail is made from aluminum extrusion furnished with a one-piece composition rubber handrail cover and assembled in the field.

**NOTE:** Standard 60 Inch stairway (with 3 center balusters) meets the revised 1994 Uniform Building Code Sections 3305 (f) (j) and 1711. Other stair diameters have 2 center balusters.

## ALUMINUM SPECIFICATIONS

All exposed aluminum parts are pre-finished with a bronze baked-on powder coat finish.

Treads and platform are formed from .125 aluminum sheet.

Center column is a sturdy 4" diameter x .156 wall. Extruded aluminum tubing.

Stair tread hubs from aluminum tubing pipe, 4 1/2" diameter x .238 wall.

Floor plate stamped from 1/4" aluminum plate.

Balcony rails are .070 wall square extruded aluminum tubing with balusters spaced 4 1/2" O.C.

- Corner post = 1 1/4" sq.
- Balusters = 3/4" sq.
- Top and bottom rail = 1" sq.

Hand rail is made from aluminum extrusion furnished with a one-piece composition rubber handrail cover and assembled in the field.

## UNIFORM BUILDING CODE on SPIRAL STAIRWAYS

**Sec. 3305. (f)** Spiral stairways may be used for required exits when the area served is limited to 400 square feet in Group R, Division 3 Occupancies (*Dwellings and lodging houses*) and in private stairways within individual units of Group R, Division 1 Occupancies (*Hotels and apartment houses*).

The tread must provide a clear walking area measuring at least 26 inches from the outer edge of the supporting column to the inner edge of the handrail.

A run of at least 7 1/2" is to be provided at a point 12 inches from where the tread is the narrowest.

The rise must be sufficient to provide 6-foot 6-inch headroom. The rise shall not exceed 9 1/2" inches.

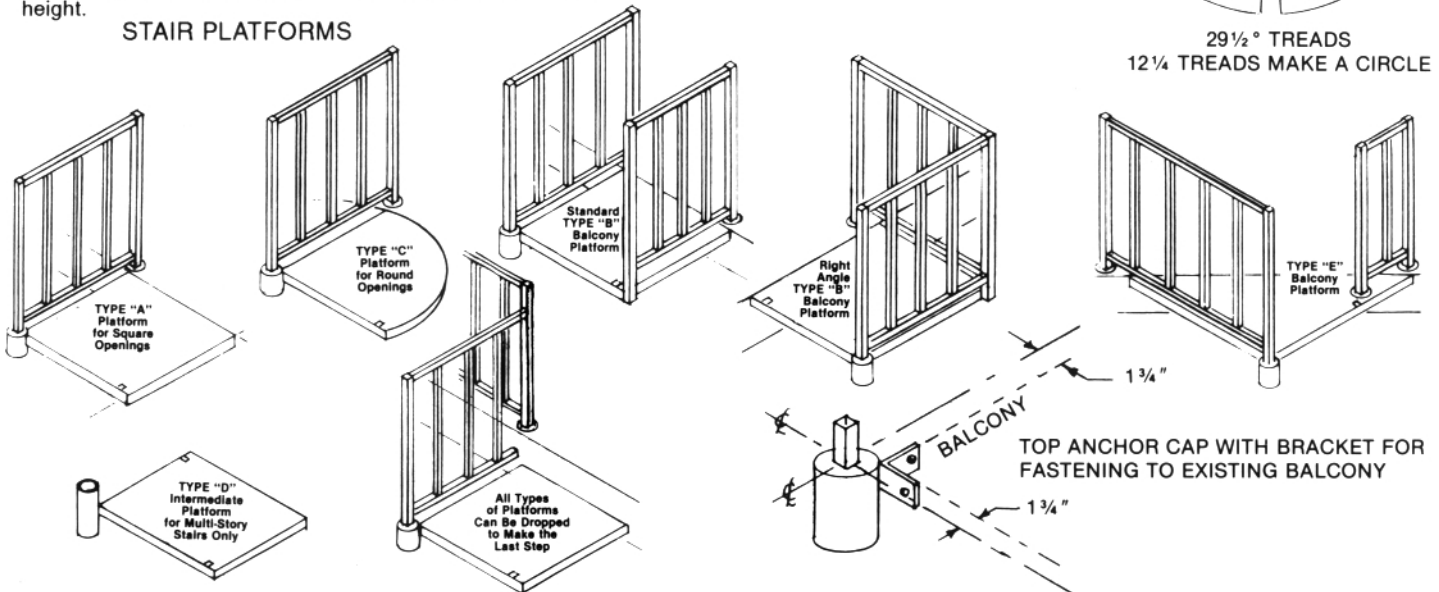
(j) Handrails shall be placed not less than 34-inches nor more than 38-inches above the nosing of treads.

**Sec. 1716.** Open guardrail and stair railings shall have intermediate rails or an ornamental pattern such that a sphere 4-inches in diameter cannot pass through.

*Exceptions.* (2) Guardrails for Group R, Division 3 Occupancies may be 36-inches in height.

(3) Interior guardrails within individual dwelling units or guest rooms of Group R, Division 1 Occupancies may be 36-inches in height.

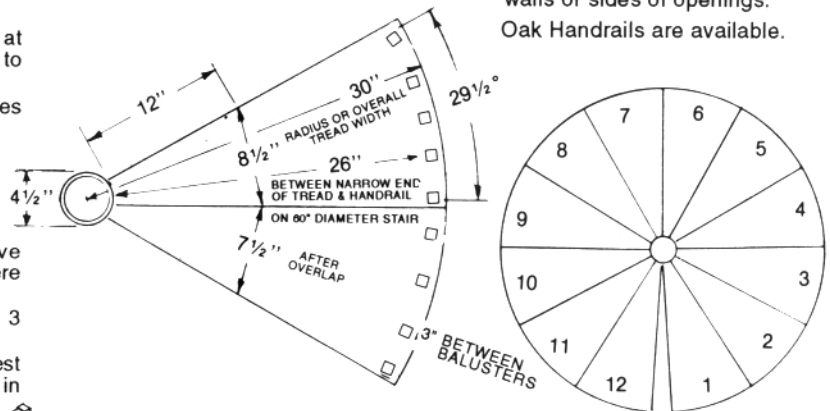
## STAIR PLATFORMS



## HEIGHT REFERENCE CHART

| NUMBER OF TREADS | MINIMUM HEIGHT USING 1/2" SPACER RINGS | MAXIMUM HEIGHT USING 1" SPACER RINGS |
|------------------|--|--------------------------------------|
| 1                | 17"                                    | 18"                                  |
| 2                | 25 1/2"                                | 27"                                  |
| 3                | 34"                                    | 36"                                  |
| 4                | 42 1/2"                                | 45"                                  |
| 5                | 51"                                    | 54"                                  |
| 6                | 59 1/2"                                | 63"                                  |
| 7                | 68"                                    | 72"                                  |
| 8                | 76 1/2"                                | 81"                                  |
| 9                | 85"                                    | 90"                                  |
| 10               | 93 1/2"                                | 99"                                  |
| 11               | 102"                                   | 108"                                 |
| 12               | 110 1/2"                               | 117"                                 |
| 13               | 119"                                   | 126"                                 |
| 14               | 127 1/2"                               | 135"                                 |
| 15               | 136"                                   | 144"                                 |
| 16               | 144 1/2"                               | 153"                                 |
| 17               | 153"                                   | 162"                                 |
| 18               | 161 1/2"                               | 171"                                 |
| 19               | 170"                                   | 180"                                 |
| 20               | 178 1/2"                               | 189"                                 |
| 21               | 187"                                   | 198"                                 |
| 22               | 195 1/2"                               | 207"                                 |
| 23               | 204"                                   | 216"                                 |
| 24               | 212 1/2"                               | 225"                                 |
| 25               | 221"                                   | 234"                                 |
| 26               | 229 1/2"                               | 243"                                 |
| 27               | 238"                                   | 252"                                 |
| 28               | 246 1/2"                               | 261"                                 |
| 29               | 255"                                   | 270"                                 |
| 30               | 263 1/2"                               | 279"                                 |

8 1/2" MINIMUM - 9" MAXIMUM RISE  
AVAILABLE IN  
48", 54", 60" DIAMETERS



29 1/2° TREADS  
12 1/4 TREADS MAKE A CIRCLE

## Please answer all questions when ordering

1. Do you want an aluminum or steel stair?
2. What is stair diameter?
3. Do you want to enter on the right or left hand side of center column at the bottom of the stair?
4. What is the finish floor to finish floor height?
5. Do you need a platform? If so, what type? (A - B - C - D - E)
6. Are extra balcony railings needed around the opening at the top? If so, indicate with a sketch, please.
7. Have you already made your opening? If so, what is the size? It is recommended that openings be made 4" larger than stair diameter.
8. Do you want oak or safety walk inserts on treads?
9. Do you want oak or safety walk on the platform?
10. Do you want oak handrail?
11. Do you want oak balcony rail cap?

If carpet is to be used, no inserts are needed.

Standard platforms are made of steel or aluminum and are made to hold stair 2" off of adjacent walls or sides of openings.

Oak Handrails are available.